

Industrial

ACT Series



Applications

Monarch ACT series end suction centrifugal pumps are of frame mount design for either belt or direct drive through a flexible coupling. This allows the option of connecting these pumps to the motor or engine of your choice.

Features

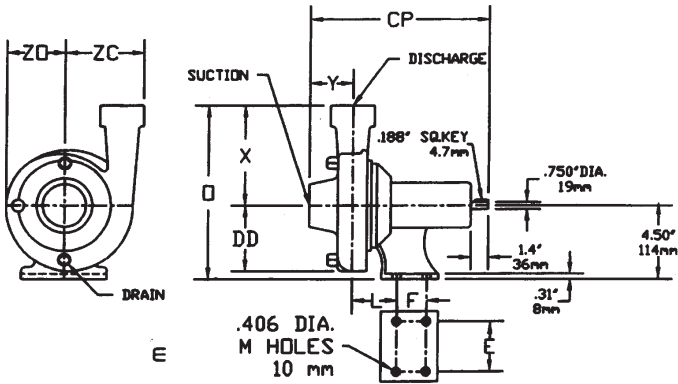
- **CASING** – Cast gray iron, thick wall, ideal for pressure boosting applications.
- **DISCHARGE OPENING** – Sizes are 1", 1 1/4" and 2" (NPT).
- **SEAL** – Buna and carbon ceramic mechanical seal.
- **IMPELLER** – ACT-5SD and ACT-6SD have glass filled noryl impellers. ACT 8SD series has cast gray iron impellers. Enclosed design.



MONARCH

Little GIANT
Pumps. People. Partnerships.

Dimensional Outline



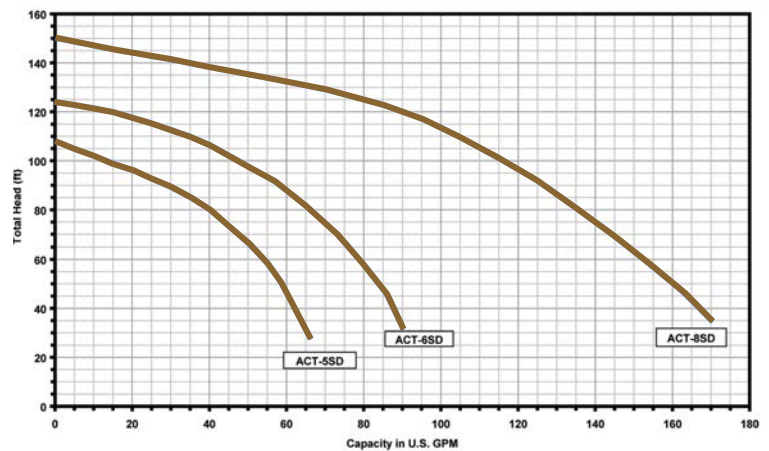
Model No.	Suction (NPT)	Discharge (NPT)	CP	DD	E	F	L	M	O	X	Y	ZC	ZO
ACT-5SD	1 1/4"	1"	8.90	3.60	4.25	-	2.34	2	9.33	4.79	2.62	4.00	3.69
ACT-6SD	1 1/2"	1 1/4"	9.28	4.06	4.25	-	2.46	2	10.81	6.31	2.88	4.72	8.84
ACT-8SD	2"	1 1/2"	11.38	4.59	4.00	2	2.88	4	10.96	6.31	3.25	5.69	4.69

*Dimensions measured in inches

Performance Chart

Model No.	RPM	HP	Total Head in Feet											
			20	30	40	50	60	70	80	90	100	120	140	
ACT-5SD	3450	2	Capacities in U.S. GPM											
			-	65	62	58	53	47	39	30	15	-	-	-
ACT-6SD	3450	2 1/2	-	92	87	84	79	73	66	58	48	15	-	
			1750	1/2	37	16	-	-	-	-	-	-	-	-
ACT-8SD	3450	5	-	170	166	160	152	144	136	126	116	90	38	
			1750	1	78	56	-	-	-	-	-	-	-	-

Performance Data



ACT-SD Series - Transmission Drive - Standard Fitted Construction

Model No.	Item No.	Suct. NPT	Disch. NPT	Transmission Data	Ship Wt. (lbs.)
ACT-5SD	614992	1 1/4"	1"	3/4" shaft size, 3/16" keyway, includes shaft assembly with sealed ball bearings	18
ACT-6SD	614993	1 1/2"	1 1/4"		18
ACT-8SD	614994	2"	2"		21



Franklin Electric

P.O. Box 12010
 Oklahoma City, OK 73157-2010
 Phone: 1.800.701.7894
 Fax: 1.800.678.7867
 www.LittleGiantPump.com

©2009 Franklin Electric Co., Inc.
 Little Giant® is a registered trademark of Franklin Electric Co., Inc.
 Form 995674 — 05/09